




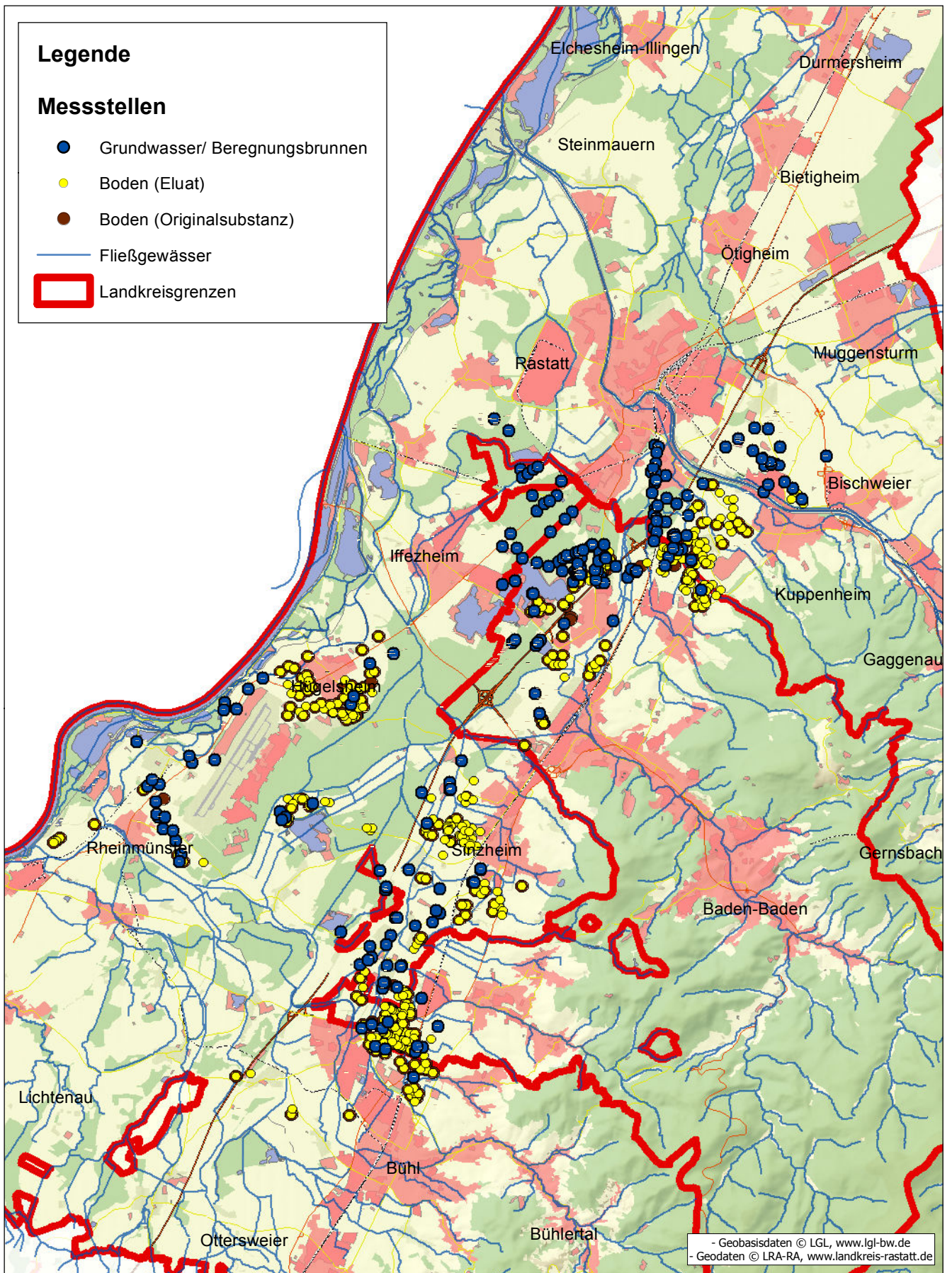


## Legende

### Messstellen

-  Grundwasser/ Beregnungsbrunnen
-  Boden (Eluat)
-  Boden (Originalsubstanz)
-  Fließgewässer
-  Landkreisgrenzen



- Geobasisdaten © LGL, [www.lgi-bw.de](http://www.lgi-bw.de)  
- Geodaten © LRA-RA, [www.landkreis-rastatt.de](http://www.landkreis-rastatt.de)

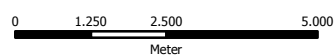
LANDKREIS



RASTATT

Erstellt: 18.08.2016

Maßstab: 1:125.000



Übersichtsplan

Bearbeitungsgebiet